

# THE ALLSOPP

*a desirable 2 bedroomed home*

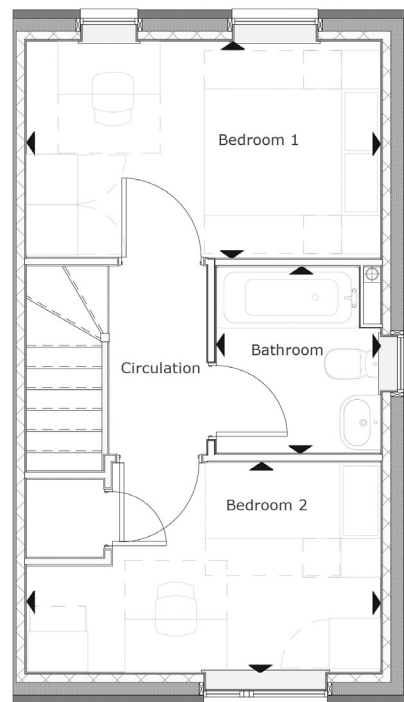
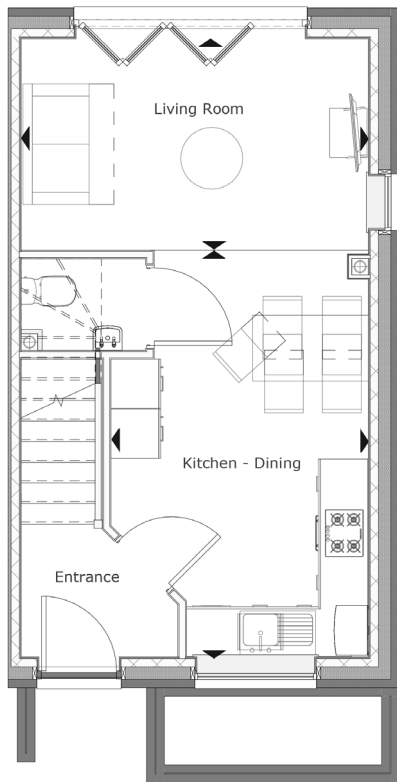


**The Allsopp** is a desirable two-bedroom home. Along with parking provision with carport, this property has a downstairs WC, an open plan kitchen/dining area and a separate living room which overlooks the rear garden.

The first floor consists of two bedrooms and a family bathroom.

# ALLSOPP

## 2 BEDROOM HOUSE



### Ground Floor

#### Room dimensions

Living	4.24m x 2.58m 13'11" x 8'5"
Kitchen/Dining	3.15m x 4.94m 10'4" x 16'2"

### First Floor

#### Room dimensions

Bedroom 1	4.24m x 2.61m 13'11" x 8'6"
Bedroom 2	4.24m x 2.5m 13'11" x 8'52"

*Specifications: This information is for guidance only and does not form any part of a contract or constitute a warranty.*

*Illustrations are of typical elevations and may vary. Floor plan are not drawn to scale.*

*Room dimensions are subject to a +/- 50mm(2") tolerance and are based on a maximum dimensions in each room.*

*Please consult your sales advisor on site for specific elevations, room dimensions and external finishes.*