

THE DAVENPORT

a superb 3 bedroomed home

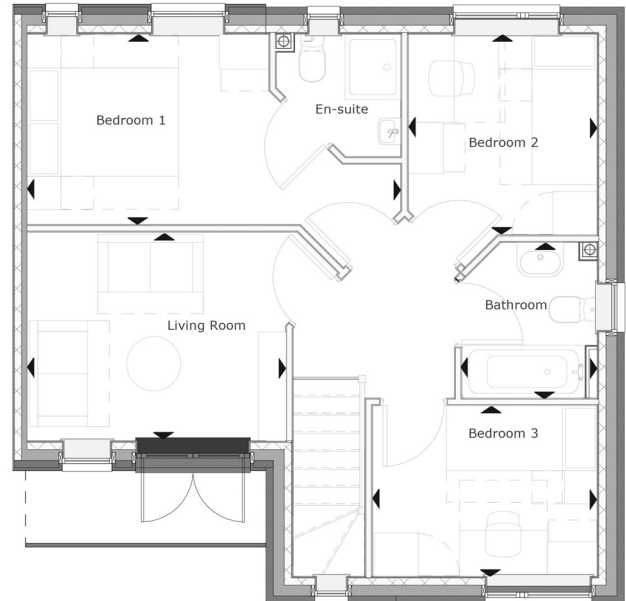
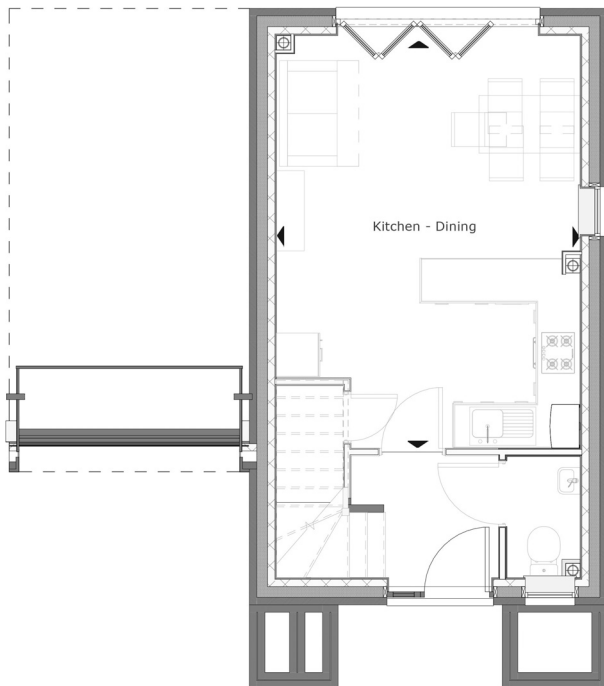


The Davenport is a superb three-bedroom town house. Along with parking provision and undercroft, this property has a ground floor WC, open plan kitchen, dining and living area.

The first floor consists of three bedrooms including the master bedroom with ensuite, a family bathroom and the main living room with French doors opening onto a balcony.

THE DAVENPORT

3 BEDROOM HOUSE



Ground Floor

Room dimensions

Kitchen/Dining

4.24m x 5.76m

13'11" x 18'10"

First Floor

Room dimensions

Living

2.88m x 3.58m

9'5" x 11'9"

Bedroom 1

5.15m x 2.61m

16'10" x 8'6"

Bedroom 2

2.30m x 2.77m

8'6" x 9'51"

Bedroom 3

3.12m x 2.63m

10'3" x 7'8"

Specifications: This information is for guidance only and does not form any part of a contract or constitute a warranty.

Illustrations are of typical elevations and may vary. Floor plan are not drawn to scale.

Room dimensions are subject to a +/- 50mm(2") tolerance and are based on a maximum dimensions in a each room.

Please consult your sales advisor on site for specific elevations, room dimensions and external finishes.