

THE HAYES

a fabulous 3 bedroomed home

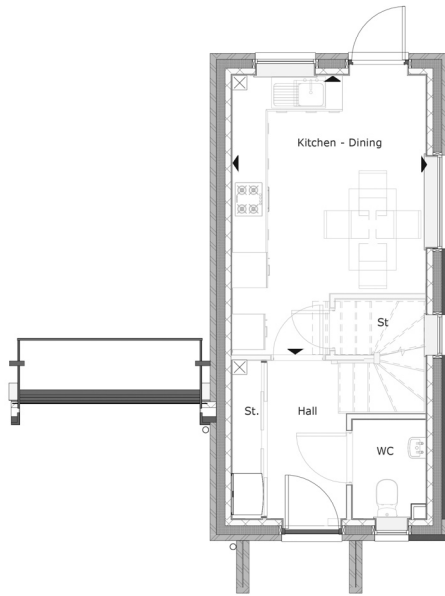


The Hayes is a fabulous three bedroom town house. It includes parking provision with an integral undercroft, on the ground floor is a hallway with WC and a open plan kitchen/diner from which there is access to the rear garden.

The first floor consists of a family bathroom, two bedrooms, along with a living room with a Juliet balcony overlooking the rear garden. The second floor has a stunning master suite with an ensuite, dressing area and an outside terrace.

THE HAYES

3 BEDROOM HOUSE



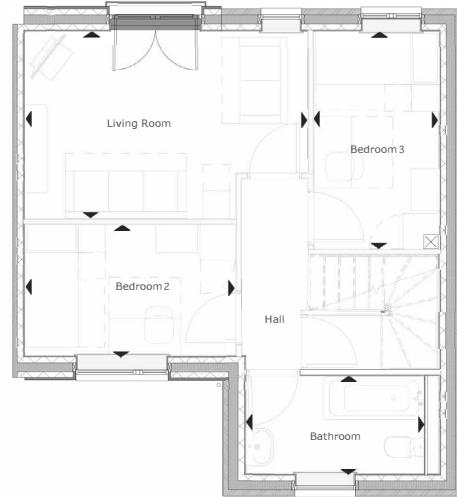
Ground Floor

Room dimensions

Kitchen/Dining

3.27m x 3.69m

10'8" x 12'1"



First Floor

Room dimensions

Living

3.17m x 4.79m

10'5" x 15'8"

Bedroom 2

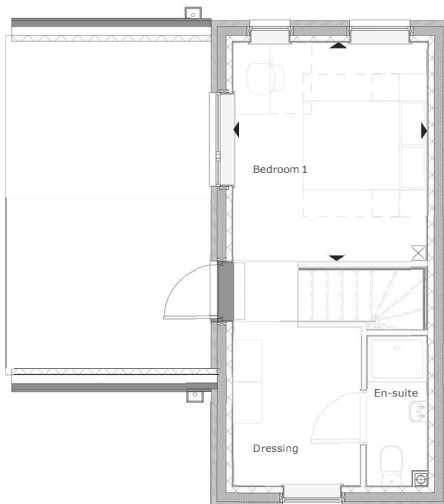
3.56m x 2.22m

11'8" x 7'3"

Bedroom 3

2.11m x 3.70m

6'11" x 12'1"



Second Floor

Room dimensions

Bedroom 1

3.26m x 3.70m

10'8" x 12'1"

Specifications: This information is for guidance only and does not form any part of a contract or constitute a warranty.

Illustrations are of typical elevations and may vary. Floor plan are not drawn to scale.

Room dimensions are subject to a +/- 50mm(2") tolerance and are based on a maximum dimensions in each room.

Please consult your sales advisor on site for specific elevations, room dimensions and external finishes.