

THE MOSELEY

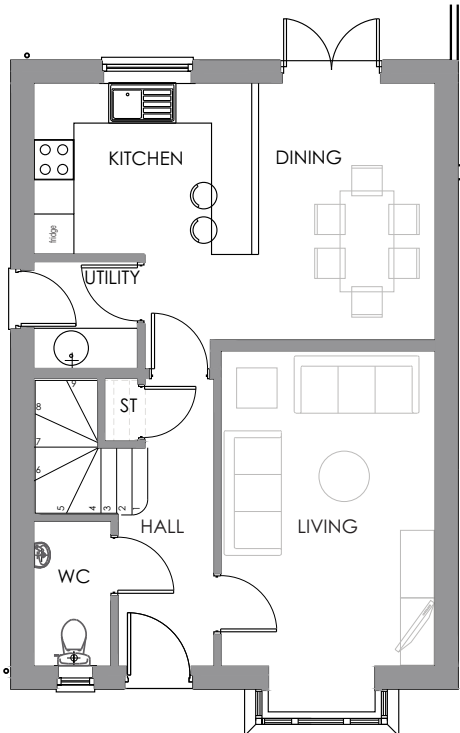
A stylish 4 bedroomed detached home



The Moseley is stunning four bedroom home featuring a spacious kitchen/diner, utility room, living room and a separate WC to the ground floor.

The first floor consists of four bedrooms and a family bathroom, in addition the property benefits from an en-suite to the master bedroom. Garage and off road parking.

THE MOSELEY



Ground Floor

Room dimensions

Kitchen/Dining

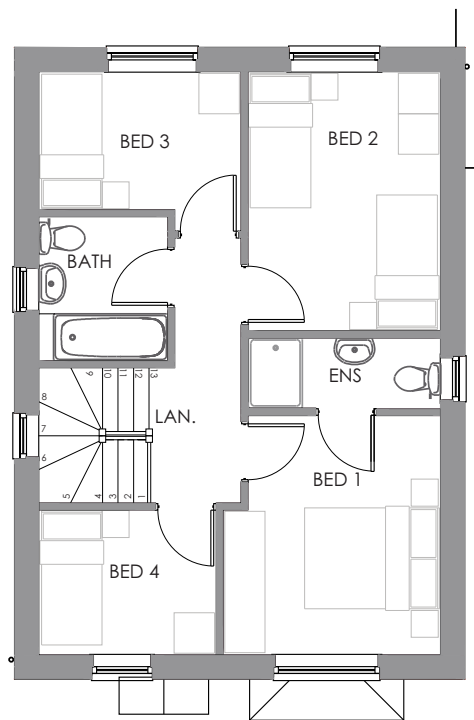
5.97m x 3.85m

19'7" x 12'7"

Living

3.20m x 4.70m

10'5" x 15'4"



First Floor

Room dimensions

Bedroom 1

3.23m x 3.56m

10'7" x 11'8"

Bedroom 2

3.85m x 2.86m

9'4" x 12'7"

Bedroom 3

3.00m x 2.05m

9'10" x 6'9"

Bedroom 4

2.64m x 2.16m

8'8" x 7'1"

TOP SPEC LIST

- Turf front and rear
- Exterior lighting front and rear
- Close panel fencing around boundary
- Gas central heating
- Fully fitted Symphony kitchen with soft closer doors and drawers
- Built in stainless steel electric oven, gas hob and extractor hood
- Contemporary family bathroom
- Downstairs cloakroom
- Full height tiling to the bath and *shower cubicles (*where applicable)
- Garage and two parking spaces

Specifications: This information is for guidance only and does not form any part of a contract or constitute a warranty. Illustrations are of typical elevations and may vary. Floor plan are not drawn to scale.

Room dimensions are subject to a +/- 50mm(2") tolerance and are based on a maximum dimensions in a each room. Please consult your sales advisor on site for specific elevations, room dimensions and external finishes.