

THE ASPEN

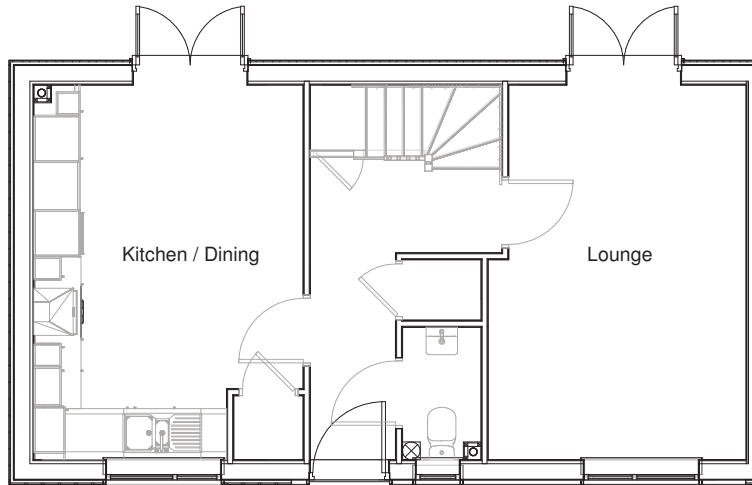


The Aspen is a modern double fronted three-bedroom semi-detached home that offers an open plan kitchen/diner and a separate spacious living room. Both rooms have the added benefit of French doors that let in plenty of natural light and lead out to the garden. The Aspen features a cloak room to the ground floor and a storage cupboard off the hallway.

The first floor consists of three bedrooms and a family bathroom, the bedroom one includes an en-suite with shower. The home also features off-street parking.

THE ASPEN

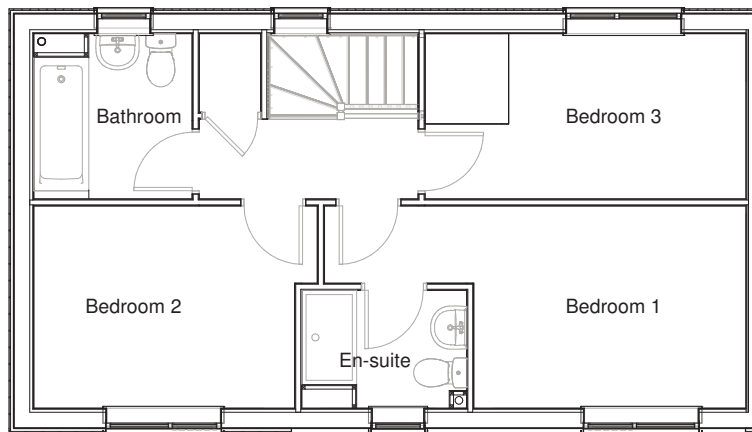
3 BEDROOM HOUSE



Ground Floor

Room dimensions

Lounge	3.28m x 4.76m 10'9" x 15'8"
Kitchen / Dining	3.43m x 4.76m 11'3" x 15'8"



First Floor

Room dimensions

Bedroom 1	5.36m x 2.57m 17'7" x 8'5"
Bedroom 2	3.61m x 2.57m 11'10" x 8'5"
Bedroom 3	4.08m x 2.10m 13'5" x 6'11"

Specifications: This information is for guidance only and does not form any part of a contract or constitute a warranty.

Illustrations are of typical elevations and may vary. Floor plan are not drawn to scale.

Room dimensions are subject to a +/- 50mm(2") tolerance and are based on a maximum dimensions in each room.

Please contact your sales consultant on site for specific elevations, room dimensions and external finishes.