

THE BEECH

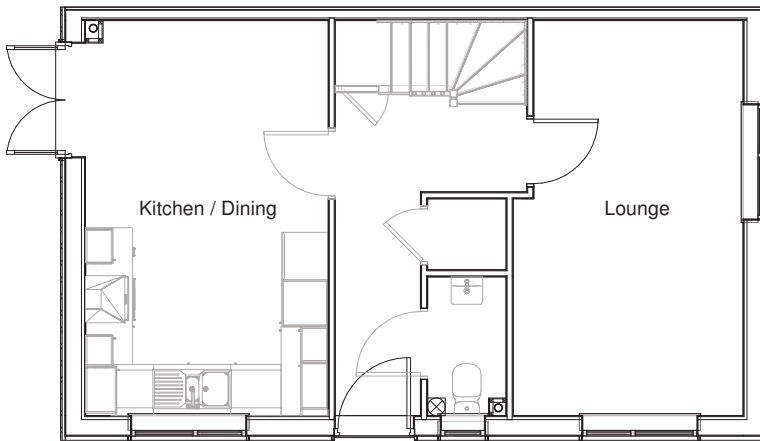


With its stylish, contemporary design, the Beech is the ideal home for modern living. The well-designed kitchen/dining room provides the perfect setting to entertain guests with French doors that lead into the garden. The separate lounge provides double aspect views ensuring plenty of light. The Beech features a ground floor cloak room and storage cupboard off the hallway.

On the first floor there are three bedrooms and a family bathroom, bedroom one includes an en-suite with shower. The home also benefits from off-street parking.

THE BEECH

3 BEDROOM HOUSE

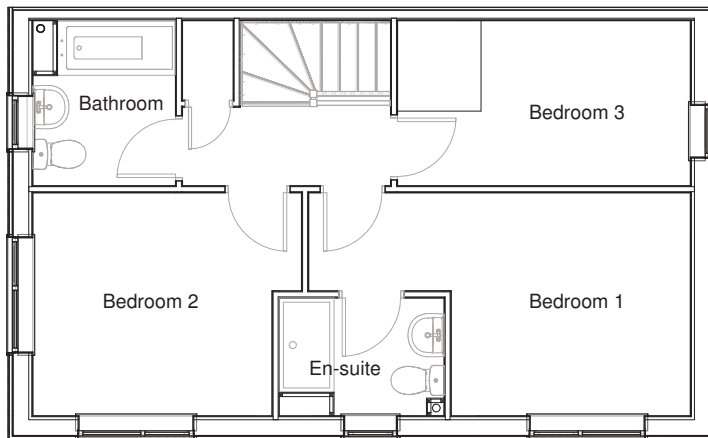


Ground Floor

Room dimensions

Lounge 2.92m x 5.03m
9'7" x 16'6"

Kitchen / Dining 3.09m x 5.03m
10'2" x 16'6"



First Floor

Room dimensions

Bedroom 1 4.86m x 2.84m
15'11" x 9'4"

Bedroom 2 3.42m x 2.84m
11'3" x 9'4"

Bedroom 3 3.73m x 2.10m
12'3" x 6'11"

Specifications: This information is for guidance only and does not form any part of a contract or constitute a warranty.

Illustrations are of typical elevations and may vary. Floor plan are not drawn to scale.

Room dimensions are subject to a +/- 50mm(2") tolerance and are based on a maximum dimensions in each room.

Please contact your sales consultant on site for specific elevations, room dimensions and external finishes.