

THE JUNIPER



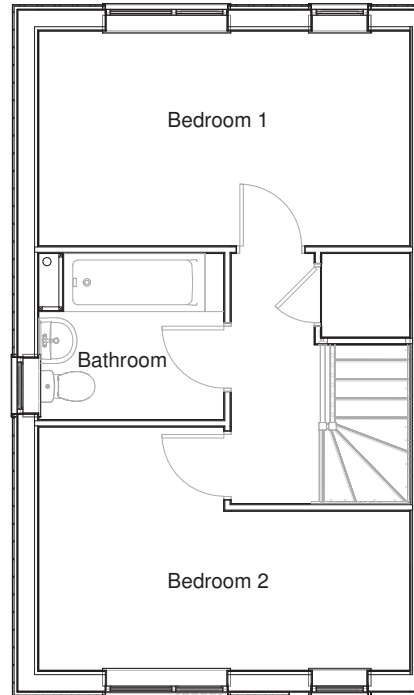
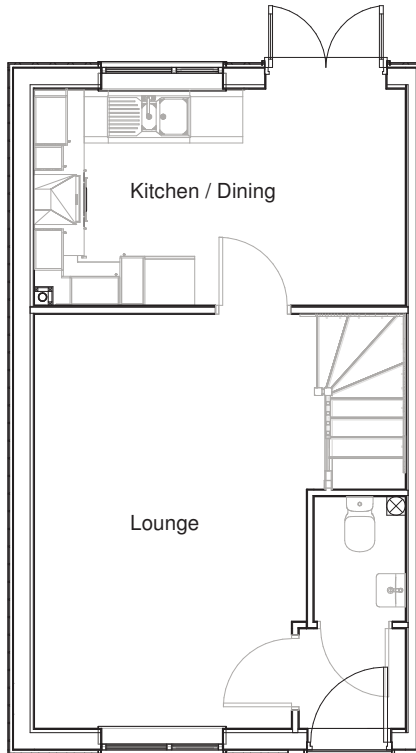
The Juniper is a modern two-bedroom house with a separate lounge and open plan kitchen/diner with French doors leading into the garden.

There is a separate ground floor cloak room to the ground floor accessed via the entrance lobby and stairs to the first floor leading of the living room.

The first floor consists of two bedrooms and a family bathroom. The home also features off street parking.

THE JUNIPER

2 BEDROOM HOUSE



Ground Floor

Room dimensions

Lounge

3.27m x 4.98m
10'9" x 16'4"

Kitchen / Dining

4.46m x 2.60m
14'8" x 8'6"

First Floor

Room dimensions

Bedroom 1

4.46m x 2.59m
14'8" x 8'6"

Bedroom 2

4.46m x 2.93m
14'8" x 9'7"

Specifications: This information is for guidance only and does not form any part of a contract or constitute a warranty.

Illustrations are of typical elevations and may vary. Floor plan are not drawn to scale.

Room dimensions are subject to a +/- 50mm(2") tolerance and are based on a maximum dimensions in a each room.

Please contact your sales consultant on site for specific elevations, room dimensions and external finishes.