

# THE ROWEN



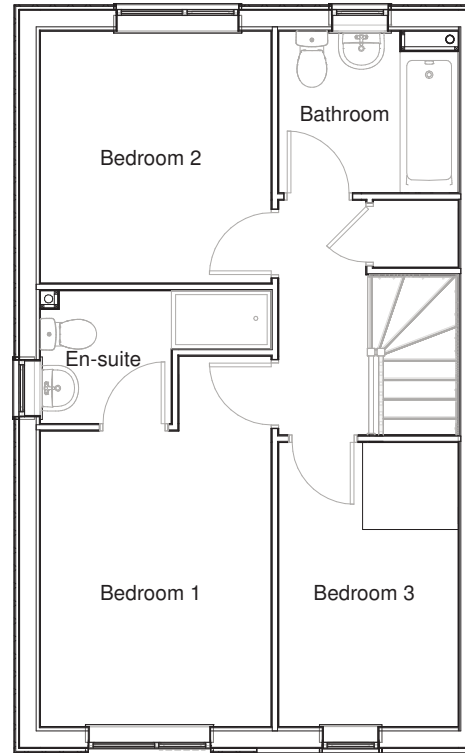
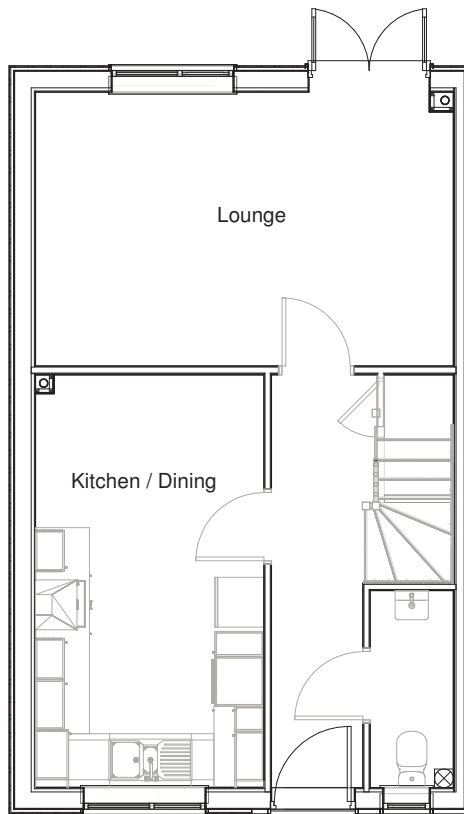
The Rowen is a practical three-bedroom semi-detached home that offers an open plan kitchen/diner to the front of the house.

It has a separate spacious living room with French doors that open to the garden. It also features a ground floor cloak room off the hallway.

The first floor consists of three good sized bedrooms and a family bathroom, bedroom one includes an en-suite with shower. The home also features off-street parking.

# THE ROWEN

## 3 BEDROOM HOUSE



### Ground Floor

#### Room dimensions

Lounge	5.03m x 3.29m 16'6" x 10'10"
Kitchen / Dining	2.75m x 4.96m 9'0" x 16'3"

### First Floor

#### Room dimensions

Bedroom 1	2.78m x 4.46m 9'1" x 14'7"
Bedroom 2	2.78m x 3.03m 9'1" x 9'11"
Bedroom 3	2.16m x 3.42m 7'1" x 11'3"

*Specifications: This information is for guidance only and does not form any part of a contract or constitute a warranty.*

*Illustrations are of typical elevations and may vary. Floor plan are not drawn to scale.*

*Room dimensions are subject to a +/- 50mm(2") tolerance and are based on a maximum dimensions in a each room.*

*Please contact your sales consultant on site for specific elevations, room dimensions and external finishes.*