

THE WIGHTWICK

A beautiful 3 bedroomed home



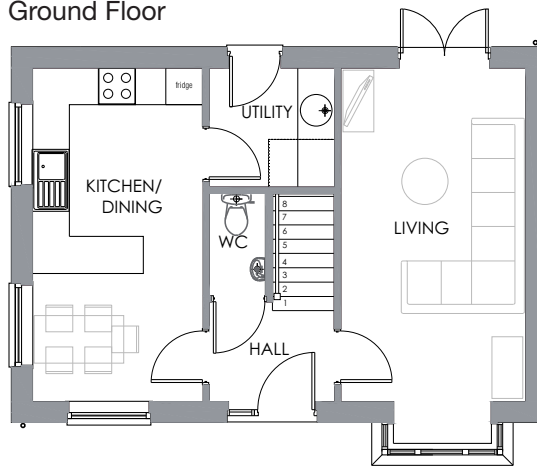
The Wightwick is a three bedroom home that offers an open plan kitchen/diner with separate utility room, a spacious living room and WC to the ground floor.

The first floor consists of three good sized bedrooms and a family bathroom, the master bedroom benefits from an en-suite. The home also benefits from off-street parking.

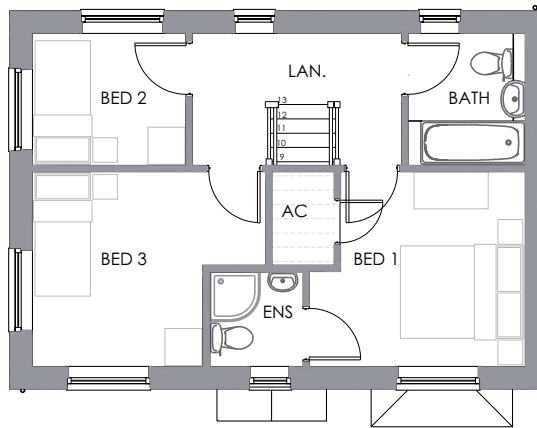
The Wightwick is available as both a detached and semi-detached property.

THE WIGHTWICK

Ground Floor



First Floor



Ground Floor

Room dimensions

Kitchen/Dining

2.77m x 5.41m

9'1" x 17'9"

Living

3.07m x 5.41m

9'10" x 17'9"

First Floor

Room dimensions

Bedroom 1

3.07m x 3.16m

9'10" x 10'4"

Bedroom 2

2.50m x 2.15m

8'2" x 11"

Bedroom 3

2.77m x 3.16m

9'1" x 10'4"

TOP SPEC LIST

- Turf front and rear
- Exterior lighting front and rear
- Close panel fencing around boundary
- Gas central heating
- Fully fitted Symphony kitchen with soft closer doors and drawers
- Built in stainless steel electric oven, gas hob and extractor hood
- Contemporary family bathroom
- Downstairs cloakroom
- Full height tiling to the bath and *shower cubicles (*where applicable)
- Allocated parking space

Specifications: This information is for guidance only and does not form any part of a contract or constitute a warranty. Illustrations are of typical elevations and may vary. Floor plan are not drawn to scale. Room dimensions are subject to a +/- 50mm(2") tolerance and are based on a maximum dimensions in a each room. Please consult your sales advisor on site for specific elevations, room dimensions and external finishes.